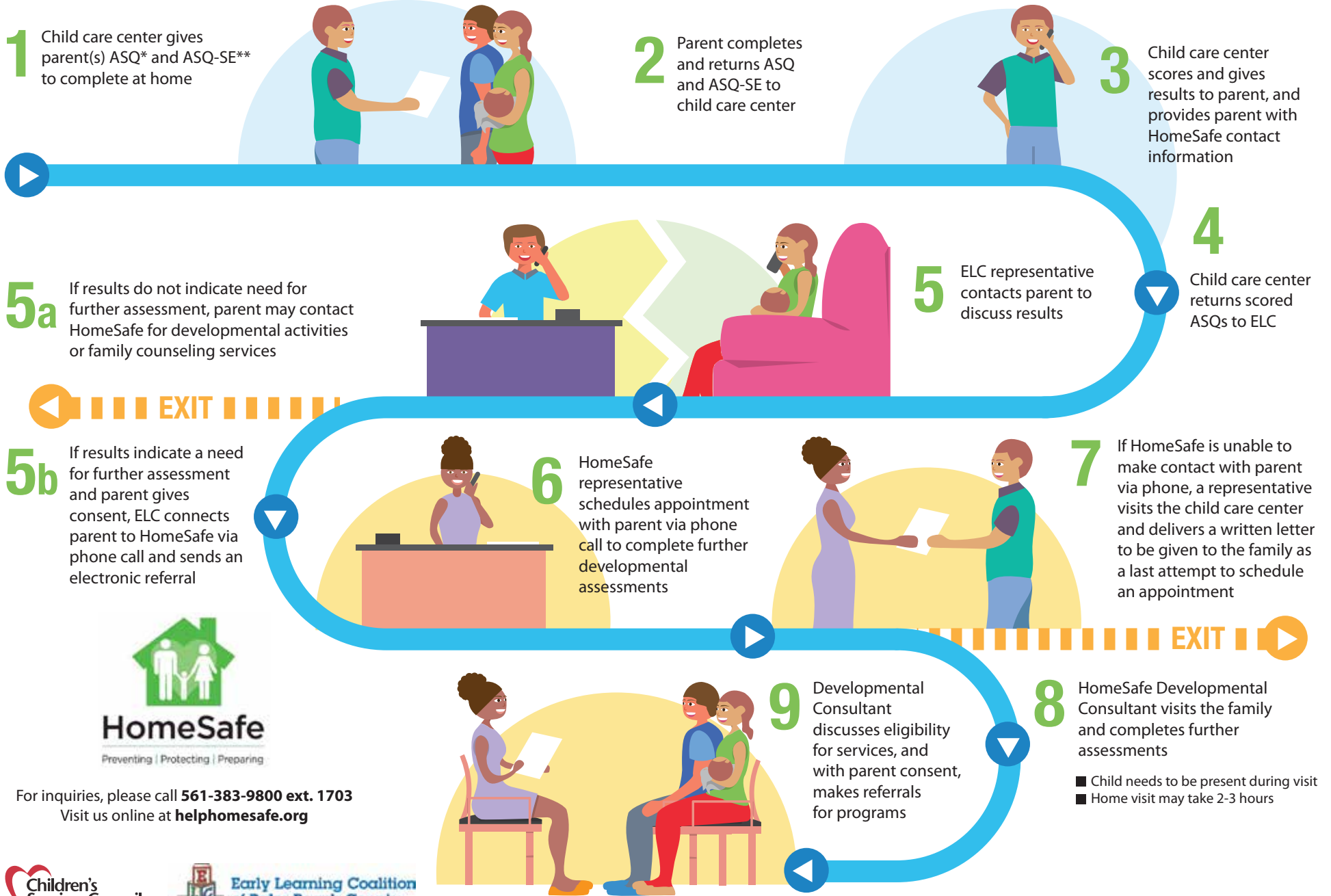


# HomeSafe + Early Learning Coalition (ELC) Road Map



**1** Child care center gives parent(s) ASQ\* and ASQ-SE\*\* to complete at home

**2** Parent completes and returns ASQ and ASQ-SE to child care center

**3** Child care center scores and gives results to parent, and provides parent with HomeSafe contact information

**4** Child care center returns scored ASQs to ELC

**5a** If results do not indicate need for further assessment, parent may contact HomeSafe for developmental activities or family counseling services

**5** ELC representative contacts parent to discuss results

**5b** If results indicate a need for further assessment and parent gives consent, ELC connects parent to HomeSafe via phone call and sends an electronic referral

**6** HomeSafe representative schedules appointment with parent via phone call to complete further developmental assessments

**7** If HomeSafe is unable to make contact with parent via phone, a representative visits the child care center and delivers a written letter to be given to the family as a last attempt to schedule an appointment

**9** Developmental Consultant discusses eligibility for services, and with parent consent, makes referrals for programs

**8** HomeSafe Developmental Consultant visits the family and completes further assessments

- Child needs to be present during visit
- Home visit may take 2-3 hours



For inquiries, please call **561-383-9800 ext. 1703**  
Visit us online at **helphomesafe.org**



\*Ages & Stages Questionnaire

\*\*Ages & Stages Questionnaire Social-Emotional