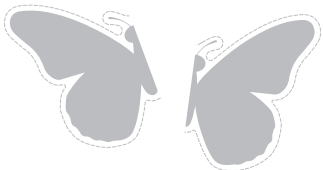
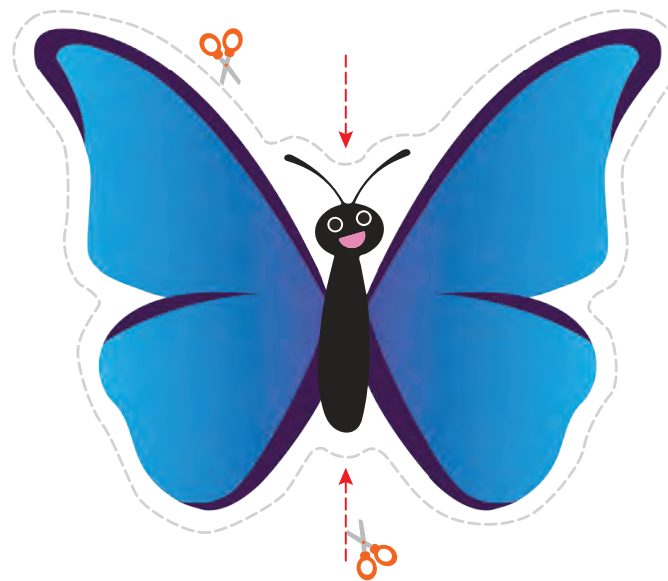
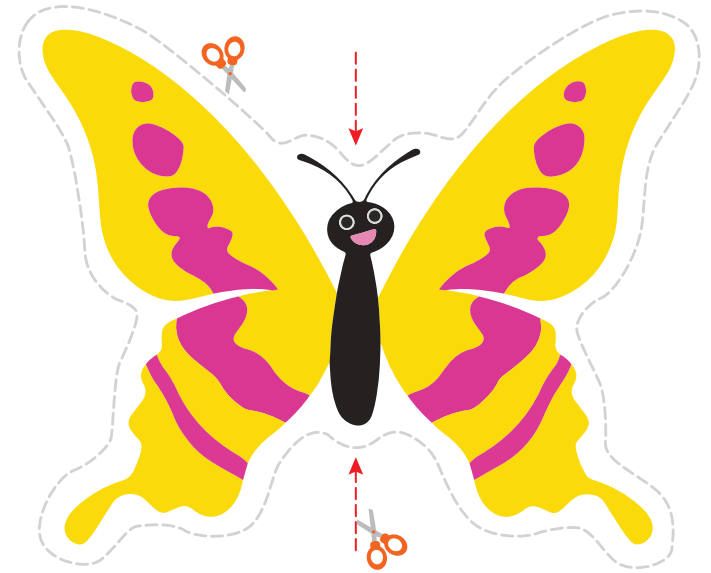
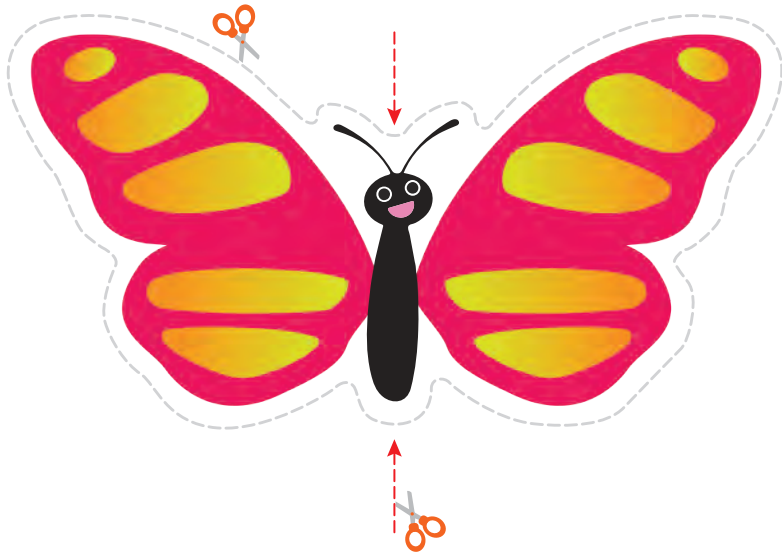


Butterfly wings are symmetrical – that means they are the same on both sides.

- Cut out the butterfly wings along the dashed lines, then cut the butterflies **in half**.
- Mix up the halves, then match the wings together.





Butterfly wings are symmetrical – that means they are the same on both sides.

- Cut out the butterfly wings along the dashed lines, then cut the butterflies **in half**.
- Mix up the halves, then match the wings together.

